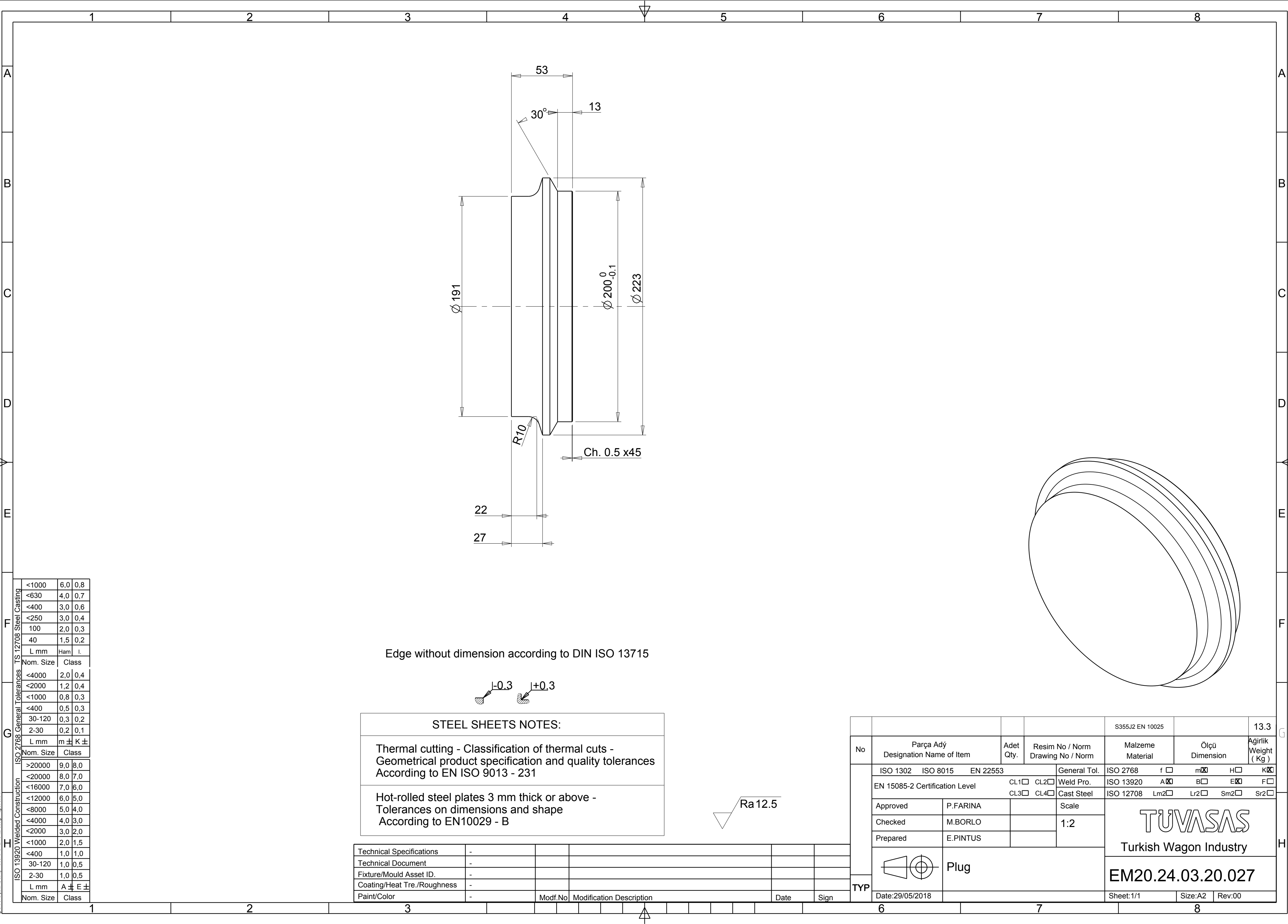


Reproduction, dissemination or use of this document or its all contents in any form without the prior written permission of TÜVASAŞ, is prohibited. Offenders will be liable for the payment of damages. All rights reserved in the event of the grant of a patent, utility model or commercial design registration.




Edge without dimension according to DIN ISO 13715

STEEL SHEETS NOTES:

Thermal cutting - Classification of thermal cuts -
Geometrical product specification and quality tolerances
According to EN ISO 9013 - 231

Hot-rolled steel plates 3 mm thick or above -
Tolerances on dimensions and shape
According to EN10029 - B

Technical Specifications	-					
Technical Document	-					
Fixture/Mould Asset ID.	-					
Coating/Heat Tre./Roughness	-					
Paint/Color	-					
		Modif.No	Modification Description	Date	Sign	

				S355J2 EN 10025		13.3
No	Parça Adý Designation Name of Item	Adet Qty.	Resim No / Norm Drawing No / Norm	Malzeme Material	Ölçü Dimension	Ağırlık Weight (Kg)
TYP	ISO 1302	ISO 8015	EN 22553	General Tol.	ISO 2768	f <input type="checkbox"/> m <input checked="" type="checkbox"/> H <input type="checkbox"/> K <input checked="" type="checkbox"/>
	EN 15085-2 Certification Level		CL1 <input type="checkbox"/> CL2 <input type="checkbox"/> CL3 <input type="checkbox"/> CL4 <input type="checkbox"/>	Weld Pro.	ISO 13920	A <input checked="" type="checkbox"/> B <input type="checkbox"/> E <input checked="" type="checkbox"/> F <input type="checkbox"/>
	Approved	P.FARINA		Cast Steel	ISO 12708	Lm2 <input type="checkbox"/> Lr2 <input type="checkbox"/> Sm2 <input type="checkbox"/> Sr2 <input type="checkbox"/>
	Checked	M.BORLO		Scale	TUVASAS Turkish Wagon Industry	
	Prepared	E.PINTUS		1:2		
				EM20.24.03.20.027		
	Plug					
Date:29/05/2018				Sheet:1/1	Size:A2	Rev:00